



ML COMMUNITY ENTERPRISE LTD

IMPACT REPORT 2022-2023

TABLE OF CONTENTS

4

Introduction

6

Our mission

8

Impact snapshot

10

Our work

12

Project: Ecosystem Coldharbour

14

Project: Phoenix Therapeutic Work

16

Project: Building Young Brixton

18

Project: Employment Readiness

20

Project: Grow Through Music

22

Project: British Airways Better World
Community Fund

24

Project: Sports For Good

26

Our Commitment To Racial Justice

28

Acknowledgements

INTRODUCTION

Message from CO-CEO's

Margaret Pierre
Ira Campbell



MLCE work towards creating a more equitable and safer society for young people and families, many of whom are from disadvantaged and underrepresented groups. We offer a wide range of key life skills development, support services and meaningful progression opportunities.

Project activities range from sports, music, and healthy lifestyles, mentoring, IAG (information, advice and guidance), mental health and wellbeing support (across therapeutic counselling and one to one key working), STEM, employment readiness support, self-exploration and positive engagement with people from diverse socio-economic groups.

Ultimately, we are empowering beneficiaries to overcome their multiple and complex disadvantages, thereby moving them towards their full potential.

Our work is rooted in trauma informed and culturally appropriate practices. Our purpose and values driven team are skilled, experienced and led by (and representative of) the diverse people we support.



"We help create a sense of pride, inspiration, ownership, well-being and belonging, and provide life-long learning opportunities."



OUR MISSION

INSPIRING CHANGE AND CREATING NEW POSSIBILITIES
FOR YOUNG PEOPLE AND THE LOCAL COMMUNITY.

IN INDIVIDUALS

Providing opportunities for individuals to fulfil their full potential

IN FAMILIES

Supporting families to build supportive and sustainable relationships

IN COMMUNITIES

Creating opportunities to bring communities together

IN SOCIETY

Contributing to making a better and safer society for all



Dr. Julius Garvey, son of Rt. Honourable Marcus Mosiah Garvey, speaking with our young people

IMPACT SNAPSHOT 2022-23

250+

YOUNG PEOPLE
SUPPORTED ACROSS
OUR PROJECTS

£50,000+

DISTRIBUTED TO
GRASSROOTS GROUPS
VIA ECOSYSTEM SMALL
GRANTS

10

MAJOR FUNDERS
SUPPORTED US

£550,000+

SECURED IN GRANTS AND DONATIONS

SUPPORTING YOUNG PEOPLE AT HIGH RISK TIMES

175+

YOUNG PEOPLE SUPPORTED
ACROSS OUR SUMMER
PROGRAMME OF FOOD AND
ENRICHING ACTIVITIES

200+

POLICE OFFICERS ENGAGED IN
FOCUS GROUPS AND TRAINING;
IMPROVING PRACTICE AND
BUILDING RELATIONSHIPS
WITH THE COMMUNITY

OPEN
ACCESS
STATS

45

YOUNG PEOPLE ON
AVERAGE PER YOUTH
SESSION

184

EVENING AND OUT OF
SCHOOL TIMES YOUTH
SESSIONS

30

HIGH RISK YOUNG PEOPLE
ENGAGED VIA LOCAL
SCHOOLS OUTREACH



ML COMMUNITY ENTERPRISE LTD

**Thank you to all our partners and
collaborators across statutory
services and the police.**

PROVIDING MEANINGFUL OPPORTUNITIES

We empower beneficiaries to overcome multiple and complex disadvantages, thereby moving them towards their full potential. Our work is rooted in trauma informed and culturally appropriate practices. Our purpose and values driven team are highly skilled and experienced.

We are led by and representative of our diverse beneficiary groups. We meet the Equity-led definition as it relates to Communities experiencing racial inequality. 80% of the board of directors are from BAME Communities, as are 80+% of our senior staff team. 50% of our leadership/senior staff team are women.





PROJECTS

ECOSYSTEM
Coldharbour

PHOENIX
Therapeutic Project

BYB
Building Young Brixton

Employment
Readiness

Grow Through Music

British Airways
Community Fund

SPORTS FOR GOOD

FUNDERS

MAYOR OF LONDON VRU

IMPACT ON URBAN HEALTH

LAMBETH COUNCIL
LOTTERY COMMUNITY FUND

LAMBETH COUNCIL
WALCOT FOUNDATION

LIGHTBULB TRUST

BRITISH AIRWAYS

LAUREUS
FOOTLOCKER
NFL FOUNDATION

ECOSYSTEM COLDHARBOUR

PROJECT

Ecosystem Coldharbour brings together five well-respected community organisations to build stronger networks and support violence reduction initiatives in the Coldharbour Ward; focused on the largest estates of Angell Town, Loughborough and Moorlands as well as central Brixton.

Youth violence in Coldharbour is driven by several interacting factors including marginalisation, deprivation and poverty, racial injustice, victimisation and gang culture.

With the help of the Mayor of London's VRU 'My Ends' funding, Ecosystem Coldharbour work to reduce violence and build local networks for meaningful change.



FUNDER

MAYOR OF LONDON VRU

PARTNERS

MLCE
CHIPS
SPIRAL SKILLS
EBONY HORSE CLUB
BAYTREE CENTRE

OUTCOMES

Developing a network of grass roots community organisations in Coldharbour, supporting them with training, grants and organisational mentoring.

Creating an innovative movement of local young people who will become the next generation of trauma-informed leaders and change makers.

Supporting young people into positive opportunities and away from crime or gang violence.

Providing wellbeing and mental health support for young people and the community.

Recruiting and training passionate local people to outreach and support their peers.

DRIVEN BY THE COMMUNITY. FOR THE COMMUNITY.

1500

UNIQUE PARTICIPANTS
ACROSS THE
PARTNERSHIP

500

SESSIONS
DELIVERED

22

GRASSROOTS ORGANISATIONS
FUNDED

MAYOR OF
LONDON

VRU

MLC
ML COMMUNITY ENTERPRISE LTD

CHIPS

We take sides. Both sides.

SPIRAL

WE BELIEVE IN YOUTH



EBONY HORSE CLUB
CHANGING LIVES IN THE HEART OF BREXTON

Baytree
CENTRE

PHOENIX THERAPEUTIC WORK

FUNDER

IMPACT ON URBAN HEALTH

PROJECT

Meeting the needs of the whole community our **Phoenix therapeutic project** provides culturally and trauma informed wellbeing support for young people and their families, working with the underlying issues that need to be addressed in order to make positive changes. Therapeutic counsellors and the keywork team are people who the community can identify with and build positive rapport with quickly. We use culturally appropriate and trauma informed ways of working.

Working closely with the Youth Service, Keywork and Employability project, Phoenix helps young people explore and disclose the trauma and incidents which have led them to where they are now, while shaping a more positive future.

OUTCOMES

Improved mental health and wellbeing

Increased emotional and social capabilities (including coping strategies and self-care)

Improved social (peer, family, community) and professional relationships

Improved confidence to access wider education, training or employment opportunities



MEETING THE REAL AND CHANGING NEEDS OF OUR COMMUNITIES.

Impact
on **Urban**
Health

87

TOTAL SERVICE USERS
SUPPORTED

672

ONE TO ONE THERAPEUTIC
KEYWORK OR COUNSELLING
SESSIONS DELIVERED

63

SERVICE USERS WERE 16+ YEARS

BUILDING YOUNG BRIXTON

PROJECT

Building Young Brixton (BYB) is a partnership made up of eight Brixton based youth and community organisations. Across partners, we have a wide offer of health, wellbeing, sports and leisure opportunities, mental health support, key worker support and skills building workshops to bring young people closer to their goals.

Widely recognised as the benchmark for best practice in partnership working around early intervention and prevention in Lambeth, BYB has created a strong, wide-reaching network of referral pathways which support young people into diverse exciting opportunities.

FUNDERS

LAMBETH COUNCIL
LOTTERY COMMUNITY FUND
MAYER'S FUND FOR LONDON

PARTNERS

HIGH TREES
MLCE
SPIRAL SKILLS
JUVENIS
IRMO
EBONY HORSE CLUB
BAYTREE CENTRE
GROVE ADVENTURE PLAYGROUND

OUTCOMES

Improved health and wellbeing

Improved relationships with peers

Increased preparation for employment

Improved engagement with school, training or employment

Young people are more civically engaged and feel a greater sense of community



EMPOWERING BRIXTON'S NEXT GENERATION OF LEADERS.

184

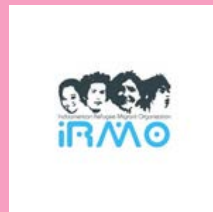
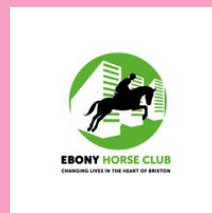
YOUTH SESSIONS HELD
AT MLCE

230

UNIQUE PARTICIPANTS

11%

SPECIAL EDUCATION NEEDS OR
DISABILITY



EMPLOYMENT READINESS

PROJECT

We are reducing Marginalisation and Increasing Opportunities locally and across wider London by supporting employment readiness in young people and the local community: with a personal growth and development focus.

Participants reflect, discover their worth and build the skills and attributes needed to bring them closer to work. We support participants to unpack the past and tackle the barriers and challenges which impact their ability to move into meaningful employment or training.

Participants can attend a range of workshops, short courses and training sessions to gain skills or qualifications and we support where possible volunteer or paid working opportunities. Participants have access to ongoing Information, Advice and Guidance and community activities around health and wellbeing, sports, leisure, food and nutrition, and creativity.

FUNDERS

LAMBETH COUNCIL
WALCOT FOUNDATION

OUTCOMES

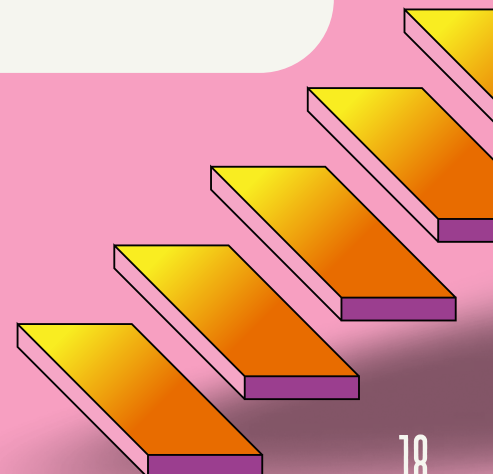
Improved employment readiness

Improved mental health and wellbeing

Increased emotional and social capabilities

Improved social and professional relationships

Improved confidence to access support, opportunities and in self-advocacy



CREATING A SENSE OF PRIDE AND BELONGING.

WALCOT
FOUNDATION


Lambeth

109

EMPLOYMENT READINESS
SESSIONS DELIVERED

41

UNIQUE PARTICIPANTS

7

YOUNG ADULTS MOVED INTO
TRAINING OR EMPLOYMENT

GROW THROUGH MUSIC

FUNDER

LIGHTBULB TRUST

PROJECT

Grow Through Music is a creative music making and experiential project for at-risk, marginalised young people, made up of diverse learning opportunities to offer choice of engagement across musical skills and disciplines (technology, instruments, vocals, the music business), intertwined with the development of emotional intelligence, key life skills, soft skills and cultural understanding; i.e. those skills that can be applied across wider education, training and employment opportunities for life.

The project offers Young People a variety of taster sessions and workshops to promote choice of learning and expression, foster greater understanding of interests and co-production opportunities.

OUTCOMES

More young people overcome economical and behavioural barriers to music making (increased participation in music making)

Young people feel safer to explore and express themselves

Young people develop new and/or improved skills in music making across a range of mediums

Young people are able to better manage and express their own feelings and ideas as well as better understand those of their peers and wider communities



REMOVING ECONOMICAL AND BEHAVIOURAL BARRIERS TO MUSIC MAKING



184

MUSIC SESSIONS

32

UNIQUE PARTICIPANTS



BRITISH AIRWAYS BETTER WORLD COMMUNITY FUND

FUNDER

BRITISH AIRWAYS

PROJECT

MLCE are at the onset of a 3-year education and employment readiness project which goes beyond skills building to tackle the multiple and complex needs of our beneficiary group. The project focuses entirely on supporting disadvantaged individuals to develop the self, explore and engage with STEM (science, tech, engineering, maths) and wider education, training and employment opportunities. We have recognised the importance of adding STEM to our curriculum/offer to help draw out and develop the wealth of untapped talent that young people/young adults in the local area are holding; despite their disadvantages. The project is funded by British Airways (BA) over 3 years, with a pledge from BA staff to take an active role in sharing skills and providing meaningful learning opportunities for beneficiaries.

OUTCOMES

Improved education engagement and employment Readiness (STEM focus)

Increased emotional and social capabilities

Improved mental health and wellbeing

Improved social and professional relationships

Improved confidence to access support and positive education, training or employment opportunities



PROVIDING STEM OPPORTUNITIES



WE EXPECT TO ENGAGE

180

DISADVANTAGED YOUNG
PEOPLE OVER THE 3 YEAR
PROJECT

OUR BENEFICIARIES ARE CULTURALLY
DIVERSE YOUNG PEOPLE/ADULTS,
WITH AROUND

95%

FROM BLACK AND MINORITY
ETHNICITIES

HELP SUPPORT THE PROJECT

SPORTS FOR GOOD

FUNDERS

LAUREUS
FOOTLOCKER
NFL FOUNDATION

PROJECT

The project offers diverse activities across football, basketball, NFL Flag, table tennis, dance and multi sports taster sessions (including yoga, tag rugby, cricket, netball and martial arts) so that young people experience a diverse range of sports and wellbeing activities. Complementing activities include a community garden initiative, healthy cooking/diet classes and day trips/outings that reduce marginalisation and introduce young people to wider sporting and healthy lifestyle opportunities.

The project uses sports alongside one-to-one keyworking, life coaching and employment readiness work to develop a holistic young person.

OUTCOMES

Increased participation in sports and enriching activities

Reduced risk-taking behaviour, offending and conflict in the local area

Increased health and wellbeing (mental and physical)

Increased trust and relationships between young people and positive role models

Increased skills and pathways to positive opportunities (including employment, and entrepreneurial)



REMOVING THE BARRIERS TO SPORTS AND WELLBEING

246

UNIQUE PARTICIPANTS

650

SESSIONS

Foot Locker



Laureus
SPORT FOR
GOOD



NFL
FOUNDATION
UNITED KINGDOM 

TONSDALE
LONDON

SWEAT
SMILE
&
REPEAT



OUR COMMITMENT TO RACIAL JUSTICE

1

Understanding and acknowledging racial history

We explore with our beneficiaries their personal histories (including racial trauma and injustice) as well as historical and those of local and wider Black and Minority communities, through exploratory learning programmes, mentoring and therapeutic work.

2

Creating a shared affirmative vision of a fair and inclusive society

We work to reduce the opportunities gap and systemic racism evident through society. We focus on partnership working with diverse stakeholders to help young people and their families navigate racial inequalities and access meaningful opportunities.

3

Focus on building civic, cultural and political power by those most impacted

We focus on empowering the most marginalised young people and families by building strong peer, role model and support networks and creating meaningful enablement and development opportunities. Our partnerships offer progression routes between stakeholders and services and cultivate peer learning and mentoring opportunities, community cohesion and civic participation.

4

Emphasizes transformative solutions that impact multiple systems

We build power through individual and community transformation (mental, emotional, physical) and resilience, together with strong partnership work spanning statutory, community and corporate sectors; through which skills, voice amplification, opportunities and change can be exercised across society.

TACKLING DISADVANTAGE



We tackle inequality in disadvantaged communities, helping to create a sense of pride, inspiration, ownership, health, well-being and belonging, while providing life-long learning opportunities.



ACKNOWLEDGEMENTS

We want to acknowledge and extend our sincere thanks and gratitude to all of the people who worked tirelessly across our organisation. Including (but not limited to):

Our Board of Directors

Margaret Pierre and Ira Campbell (Co-CEO's)

Surjit Power (Ecosystem Coldharbour)

Wayne James (MLCE Youth Service)

Joanna Dale (Employability Service)

Our dedicated staff teams across Youth work, Key work, Employability, Therapeutic services and Community Outreach.

Our colleagues and Partners across Ecosystem Coldharbour; **Baytree Centre, Spiral Skills, CHIPS, Ebony Horse Club** and the **Mayor's Violence Reduction Unit** and our **Building Young Brixton** partners.

Looking forward to making even more of an impact next year

**MAYOR OF
LONDON**

VRU

**WALCOT
FOUNDATION**


Lambeth

Impact
on **Urban
Health**

BRITISH AIRWAYS

 **LIGHTBULB
TRUST**

 **MAYOR'S
FUND FOR
LONDON**
HELPING YOUNG LONDONERS GROW

 **COMMUNITY
FUND**

Foot Locker

 **NFL
FOUNDATION**
UNITED KINGDOM 


Laureus
SPORT FOR
GOOD

TO OUR FUNDERS

WE THANK YOU

FOR YOUR CONTINUED SUPPORT OF

OUR PROJECTS